

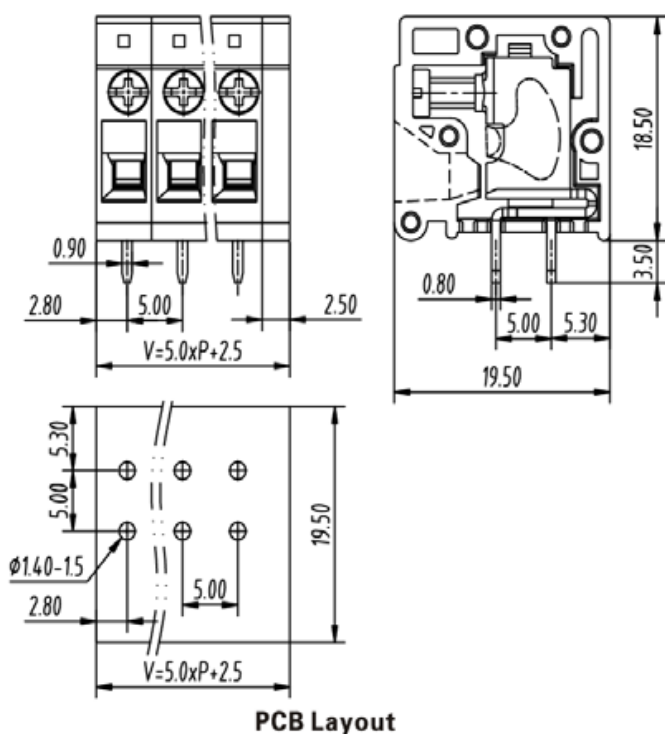


5.00mm Pitch



		
Rated Voltage	300V	320V
Rated Current	20A	24A
Insulation Withstand Voltage	AC 2200V / Min.	
Insulation Resistance	500MΩ or More at DC500V	
Temperature Range	-40°C to +105°C	
Wire Range	28-12AWG	0.34-2.5mm <sup>2</sup>
Wire Strip Length	11.0mm	
Screw Torque Value	0.25N.m	

Units: mm



Housing: PA66, UL94V-0  
Pin: Copper Alloy, Tin Plated

### Part Numbering System:

120-500VA - XXP - XXX - X

①      ②      ③      ④

① Series

② Number of Poles: 02, 03, 04, ..., 24

③ Insulator Color: GRN = Green

④ Screw: S = Slot, C = Cross